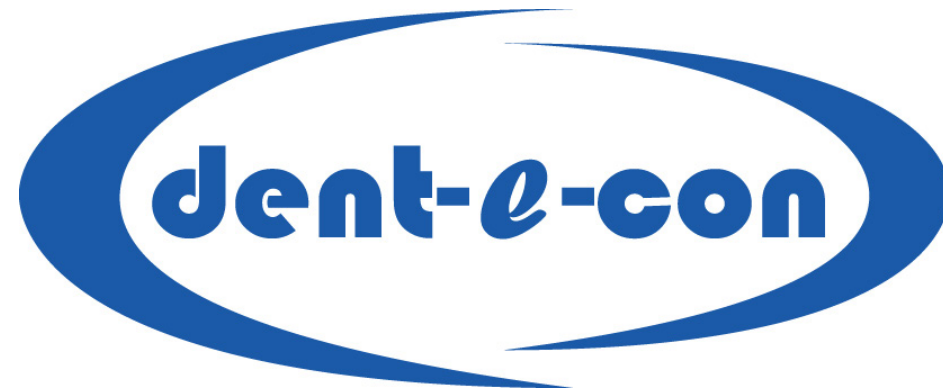


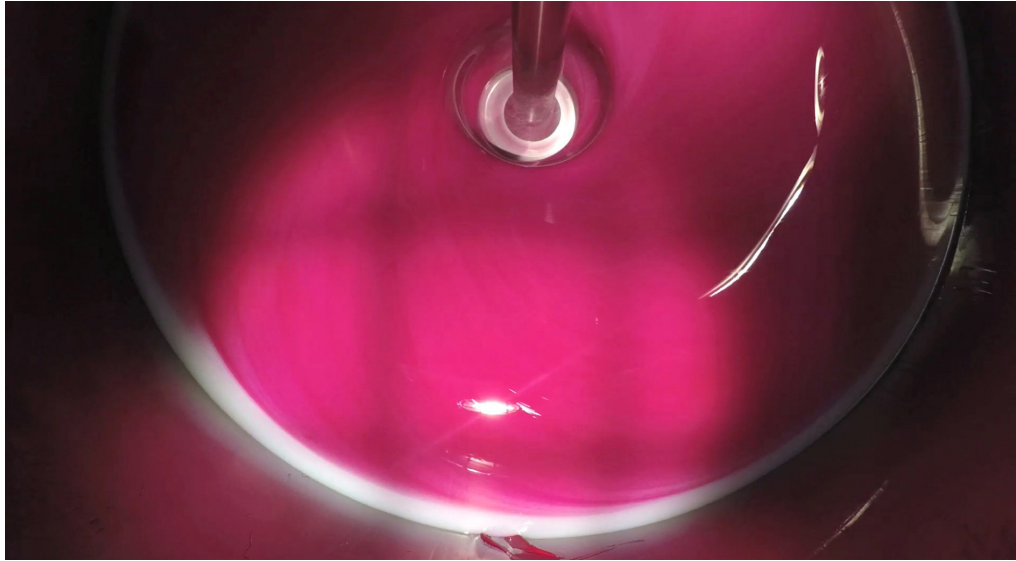
DENTAL CATALOGUE
2017



SILICONE EXPERTS



LAB SILICONES	
DUPLICATING SILICONES	4
PUTTY SILICONES	9
CARTRIDGE SILICONES	12
MODEL PREPARING	14
SANDBLASTING	15
ABRASIVES	16
MODEL CASTING	18
ACCESSORIES FOR CERAMICS	21
EQUIPMENT & ACCESSORIES	22
SILICONE FACTS	23



We are ...

We are a family run business and a leading manufacturer of addition curing silicones. Our core competence is the formulation and manufacture of laboratory silicones which are used for dental laboratory purposes. We are developing silicones for other industries (food, mold and model making) since 2010 at our location in Lonsee.

A secure future for our company by success and growth is the basis for long-term cooperation with our customers. Thanks to the high commitment of our employees we could reach a strong market position.

We deal with dental products since 2004. The great experience in conception and manufacturing high-precision addition curing silicones and other dental materials is the basis for our company.

... there for you!

Telephone: +49 (0)7336 92133-69

Fax: +49 (0)7336 92133-79

Email: info@dent-e-con.de

Internet: www.dent-e-con.de

dent-e-con e.K.

**Gartenstraße 19
D-89173 Lonsee
Germany**



DUPLICATING SILICONES

REPLISIL 9

Soft duplicating silicone in shore hardness A 9, extreme fluidity ensures a particular detail precision. Used for duplicating in a flask and for thin stumps. Due to pure silicone it leads to highest volume. At highest tear resistance very flexible – hence easy to deflask. It has a 100% recovery after deflasking, no shrinkage and pinpoint dimensional accuracy.
 Colour: Base blue, Catalyst white

REPLISIL 9 N normal setting (ca. 25 min.)

REPLISIL 9 S fast setting (ca. 10 min.)



REPLISIL 17

Medium hard duplicating silicone in shore hardness A 17, extreme fluidity ensures a particular detail precision. Used for duplicating in a flask. Due to pure silicone it leads to highest volume. At highest tear resistance very flexible – hence easy to deflask. It has a 100% recovery after deflasking, no shrinkage and pinpoint dimensional accuracy.
 Colour: Base blue, Catalyst white

REPLISIL 17 N normal setting (ca. 25 min.)



item	unit	item number
REPLISIL 9 N	2 x 1 kg (2 x 950 ml)	241109701
	2 x 6 kg (2 x 5.700 ml)	241109806
	2 x 25 kg (2 x 23.750 ml)	241109825
REPLISIL 9 S	2 x 1 kg (2 x 950 ml)	241209701
	2 x 6 kg (2 x 5.700 ml)	241209806
	2 x 25 kg (2 x 23.750 ml)	241209825

item	unit	item number
REPLISIL 17 N	2 x 1 kg (2 x 950 ml)	241117701
	2 x 6 kg (2 x 5.700 ml)	241117806
	2 x 25 kg (2 x 23.750 ml)	241117825

REPLISIL 22

Hard duplicating silicone in shore hardness A 22, extreme fluidity ensures a particular detail precision. Used for free duplicating for example with a sleeve. Due to pure silicone it leads to highest volume. At highest tear resistance very flexible – hence easy to deflask. It has a 100% recovery after deflasking, no shrinkage and pinpoint dimensional accuracy.
 Colour: Base pink, Catalyst white

REPLISIL 22 N normal setting (ca. 25 min.)

REPLISIL 22 S fast setting (ca. 10 min.)



item	unit	item number
REPLISIL 22 N	2 x 1 kg (2 x 950 ml)	241122701
	2 x 6 kg (2 x 5.700 ml)	241122806
	2 x 25 kg (2 x 23.750 ml)	241122825
REPLISIL 22 S	2 x 1 kg (2 x 950 ml)	241222701
	2 x 6 kg (2 x 5.700 ml)	241222806
	2 x 25 kg (2 x 23.750 ml)	241222825

REPLISIL 22 NF

Hard duplicating silicone in shore hardness A 22, ensures a particular detail precision. Used for free duplicating for example with a sleeve. Small proportion of additional fillers with very good technical datas. At highest tear resistance very flexible – hence easy to deflask. It has a 100% recovery after deflasking, no shrinkage and pinpoint dimensional accuracy.
 Colour: Base light red, Catalyst white

REPLISIL 22 NF normal setting (ca. 20 min.)



item	unit	item number
REPLISIL 22 NF	2 x 1 kg (2 x 885 ml)	242122701
	2 x 6 kg (2 x 5.310 ml)	242122806
	2 x 25 kg (2 x 22.125 ml)	242122825

DUPLICATING SILICONES

REPLISIL 25 NF

Hard duplicating silicone in shore hardness A 25, ensures a particular detail precision. Used for free duplicating for example with a sleeve. Small proportion of additional fillers with very good technical datas. At highest tear resistance very flexible – hence easy to deflask. It has a 100% recovery after deflasking, no shrinkage and pinpoint dimensional accuracy.
 Colour: Base light red, Catalyst white

REPLISIL 25 NF normal setting (ca. 20 min.)



REPLISIL 32

X-hard duplicating silicone in shore hardness A 32, ensures a particular detail precision. Used for free duplicating for example with a sleeve. Proportion of additional fillers with highest technical datas. At highest tear resistance very flexible – hence easy to deflask. It has a 100% recovery after deflasking, no shrinkage and pinpoint dimensional accuracy.
 Colour: Base blue, Catalyst white

REPLISIL 32 N normal setting (ca. 20 min.)



item	unit	item number
REPLISIL 25 NF	2 x 1 kg (2 x 885 ml)	242125701
	2 x 6 kg (2 x 5.310 ml)	242125806
	2 x 25 kg (2 x 22.125 ml)	242125825

item	unit	item number
REPLISIL 32 N	2 x 1 kg (2 x 840 ml)	241132701
	2 x 6 kg (2 x 5.040 ml)	241132806
	2 x 25 kg (2 x 21.000 ml)	241132825

REPLISIL 19 N - transparent

Medium hard duplicating silicone in shore hardness A 19, extreme fluidity ensures a particular detail precision. Used for polymerization of light-curing composites. Due to pure silicone it leads to highest volume. Easy to deflask. It has a 100% recovery after deflasking, no shrinkage and pinpoint dimensional accuracy.

Colour: Base transparent, Catalyst transparent

REPLISIL 19 N normal setting (ca. 15 min.)



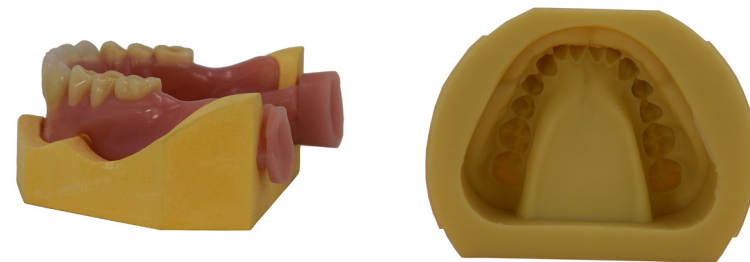
item	unit	item number
REPLISIL 19 N	2 x 1 kg (2 x 1.040 ml)	241319701
	2 x 6 kg (2 x 6.240 ml)	241319806

REPLISIL A 14 N - for acrylic resin casting technique

Medium hard duplicating silicone in shore hardness A 14, extreme fluidity ensures a particular detail precision. Slightly oily, hydrophilic surface. Easy removal of prostheses. At highest tear resistance very flexible – hence easy to deflask. It has a 100% recovery after deflasking, no shrinkage and pinpoint dimensional accuracy.

Colour: Base yellow, Catalyst white

REPLISIL A 14 N normal setting (ca. 25 min.)



item	unit	item number
REPLISIL A 14 N	2 x 1 kg (2 x 895 ml)	243114101
	2 x 6 kg (2 x 5.370 ml)	243114106

DUPLICATING SILICONES

Accessories for duplicating

REPLISIL FB A debubbler for reducing the tension on silicone surfaces which improves the flow properties of the investment for pouring best possible duplicating models.

Dispenser Pump For 6 kg cans of REPLISIL with drip protection.

Duplicating Flask Made from clear plastic for economic silicone duplicating.

Outlet Tap For 6- und 25-kg-cans of REPLISIL.



item	unit	item number
REPLISIL FB	250 ml pump spray bottle	241901025
	1000 ml refill bottle	241901100
Dispenser Pump	1 pc.	992419021
Duplicating Flask	1 pc.	241920186
Outlet Tap 6 kg	1 pc.	992410251
Outlet Tap 25 kg	1 pc.	992418551

MIXXER

Automatic mixing- and dosing unit for addition curing silicones. Fully automatic 1:1 dosing by the touch of a button and a bubble-free and homogenous mixing. Mixing tips can be fixed and removed very easily. A clogging of the new mixing head with spatially divided outlets and integrated back pressure valve is impossible. MIXXER is very space-saving due to its individual adjustable tilting. 2 Adapter for 1 or 6 Kg are included.

Measures: 325 mm x 245 mm x 270 mm (h x w x d)
 Voltage: 230 volt/115 volt
 Output Power: 260 watt
 Weight: 10,8 kg

Delivery contents:

- MIXXER mixing and dosing unit
- Adapter (A+B) for 1 or 6 kg REPLISIL
- Mixing tips, pink, 10 pcs.



item	unit	item number
MIXXER	1 pc.	902415040
Optional accessories:		
Adapter for 1 kg REPLISIL (A+B)	1 pair	992433701
Adapter for 6 kg REPLISIL (A+B)	1 pair	992413806
Mixing tips pink	50 pcs.	992410010

STENSIL ECO 70

Soft and very flexible putty silicone in shore hardness A 70.
 This addition curing 1:1-silicone has an simple and save mixing ratio, supple and easily kneadable consistency and allows precise impression definition and optimal dimension stability. It has high purity, smooth surface and is easy to cut. Highest volume thanks low density. STENSIL ECO is boil proof, non-sticking and physiologically uncritical (platinum catalyst). Used for preparation of control bites, models for denture repairs, isolation of teeth , etc.
 Colour: Base blue, Catalyst white
 Curing time: ca. 4,5 min.



item	unit	item number
STENSIL ECO 70	2 x 1,5 kg (2 x 960 ml)	281170215
	2 x 5 kg (2 x 3 .205 ml)	281170350
	2 x 25 kg (2 x 16.000 ml)	281170425

STENSIL ECO 85 F

Medium hard and flexible putty silicone in shore hardness A 85.
 This addition curing 1:1-silicone has an simple and save mixing ratio, supple and easily kneadable consistency and allows precise impression definition and optimal dimension stability. It has high purity, smooth surface and is easy to cut. Highest volume thanks low density. It contains a small proportion of additional fillers. STENSIL ECO is boil proof, non-sticking and physiologically uncritical (platinum catalyst). Used for preparation of control bites, models for denture repairs, isolation of teeth , etc.
 Colour: Base blue, Catalyst white
 Curing time: ca. 4,5 min.



item	unit	item number
STENSIL ECO 85 F	2 x 1,5 kg (2 x 938 ml)	282185215
	2 x 5 kg (2 x 3.125 ml)	282185350
	2 x 25 kg (2 x 15.625 ml)	282185425

PUTTY SILICONES

STENSIL ECO 90

Hard but still flexible putty silicone in shore hardness A 90. This addition curing 1:1-silicone has a simple and save mixing ratio, supple and easily kneadable consistency and allows precise impression definition and optimal dimension stability. It has high purity, smooth surface and is easy to cut. Highest volume thanks to low density. STENSIL ECO is boil proof, non-sticking and physiologically uncritical (platinum catalyst). Used for preparation of control bites, models for denture repairs, isolation of teeth, etc. Colour: Base blue, Catalyst white. Curing time: ca. 4,5 min.



item	unit	item number
STENSIL ECO 90	2 x 1 kg (2 x 960 ml)	281190215
	2 x 5 kg (2 x 3.205 ml)	281190350
	2 x 25 kg (2 x 16.000 ml)	281190425

STENSIL ECO 90 F

Hard but still flexible putty silicone in shore hardness A 90. This addition curing 1:1-silicone has a simple and save mixing ratio, supple and easily kneadable consistency and allows precise impression definition and optimal dimension stability. It has high purity, smooth surface and is easy to cut. It contains a small proportion of additional fillers. STENSIL ECO is boil proof, non-sticking and physiologically uncritical (platinum catalyst). Used for preparation of control bites, models for denture repairs, isolation of teeth, etc. Colour: Base blue, Catalyst white. Curing time: ca. 4,5 min.



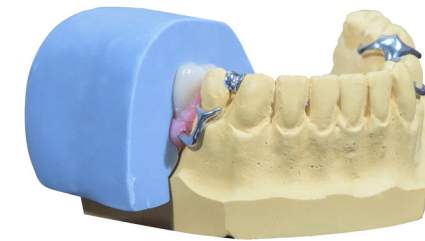
item	unit	item number
STENSIL ECO 90 F	2 x 1 kg (2 x 938 ml)	282190215
	2 x 5 kg (2 x 3.125 ml)	282190350
	2 x 25 kg (2 x 15.625 ml)	282190425

STENSIL ECO 95

Extra hard putty silicone in shore hardness A 95.
 This addition curing 1:1-silicone has a simple and save mixing ratio, supple and easily kneadable consistency and allows precise impression definition and optimal dimension stability. It has high purity, smooth surface and is easy to cut. It contains a small proportion of additional fillers. STENSIL ECO is boil proof, non-sticking and physiologically uncritical (platinum catalyst). Used for preparation of control bites, models for denture repairs, isolation of teeth, etc.
 Colour: Base blue, Catalyst white
 Curing time: ca. 4,5 min.



item	unit	item number
STENSIL ECO 95	2 x 1 kg (2 x 910 ml)	281195215
	2 x 5 kg (2 x 3.030 ml)	281195350
	2 x 25 kg (2 x 15.151 ml)	281195425



CARTRIDGE SILICONES

GINGISIL

Soft and very flexible cartridge silicone in shore hardness A 70. This addition curing 1:1-cartridge silicone is used for manufacturing flexible gingival masks for implant works. It has an optimal dimension stability, is highly tear resistant and very flexible. After curing it is easy to mill and also scanable. GINGISIL is available in two versions, thin flowing and steady. The scope of supply includes 6 mixing tips and an silicone agent REPLISIL TM. Colour: pink
Curing time: ca. 5 min.

GINGISIL FL thin flowing, millable

GINGISIL ST steady, highly millable



GINGISIL soft

Very soft and very flexible cartridge silicone in shore hardness A 45. This addition curing 1:1-cartridge silicone is used for manufacturing flexible gingival masks as well as dental master and saw models. It has an optimal dimension stability, is highly tear resistant and very flexible. GINGISIL soft is fast and easy to use. The scope of supply includes 6 mixing tips and an silicone agent REPLISIL TM. Colour: pink
Curing time: ca. 5 min.



item	unit	item number
GINGISIL FL	2 x 50 ml cartridge A+B incl. 6 mixing tips blue, short + 15 ml REPLISIL TM, spray	271100105
GINGISIL ST	2 x 50 ml cartridge A+B incl. 6 mixing tips blue, short + 15 ml REPLISIL TM, spray	271200105
Mixing tips blue, short	50 pcs.	992719015

item	unit	item number
GINGISIL soft	2 x 50 ml cartridge A+B incl. 6 mixing tips yellow, System II + 15 ml REPLISIL TM, spray	271300105
Mixing tips yellow, System II	50 pcs.	992719020

MATRISIL 80

Medium hard, transparent matrix-cartridge silicone in shore hardness A 80. This addition curing 1:1-cartridge silicone is used for light-curing composites and also as transparent putty. Easy to cut and mill. The scope of supply includes 6 T-Mixer mixing tips. Colour: transparent



item	unit	item number
MATRISIL 80	2 x 50 ml cartridge A+B incl. 6 mixing tips green, T-Mixer	279180105
Mixing tips green, T-Mixer	50 pcs.	992719025

Accessories for cartridge silicones

Mixing tips

for GINGISIL blue, short, pointed	50 pcs.	#992719015
for GINGISIL soft yellow, System II	50 pcs.	#992719020
for MATRISIL green, T-Mixer	50 pcs.	#992719025



Automix

Dispensing gun for cartridge silicones 1:1	1 pc.	#992720011
---	-------	------------



REPLISIL TM silicone separating agent

Spray 15 ml	1 pc.	#241901015
-------------	-------	------------



MODEL PREPARING

REPLIGEL

Reversible duplicating gel on base of agar-agar. Due to its excellent reproduction accuracy even to the smallest details REPLIGEL is very well suitable for demanding partial denture. It produces a tear proof, highly elastic duplicating mould which doesn't cause any problems either at undercuts. A high-quality base material produces an extremely long durability.

- REPLIGEL P** pink, for all gypsum-free investment materials
- REPLIGEL PD** pink, extra hard for attachment work and acrylic casting technique
- REPLIGEL PA** turquoise, special duplicating gel for acrylic casting technique
- REPLIGEL PG** pink, special duplicating gel for plaster models

unit: **6 kg bucket**

item	item number
------	-------------



REPLIGEL P	245510306
REPLIGEL PD	245513306
REPLIGEL PA	245514306
REPLIGEL PG	245515306

Occlusion-Spray

OKKLU EXACT mint-green with 2 x spray nozzles (fine + normal)

Spray	75 ml	#411001075
--------------	--------------	-------------------



OKKLU CLASSIC green with 1 x spray nozzle

Spray	75 ml	#411002075
--------------	--------------	-------------------



Rapid Glue

Bottle	10 ml	#361010710
Pipette	2 ml	#361010702



LIQUIDIP

An alcohol-based cold dipping liquid in low viscosity for hardening the surfaces of investment models when using gel-duplicating material (REPLIGEL). LIQUIDIP penetrates well into the surface of the duplicate model, it becomes hard and smooth and improves the adhesion of waxes when modelling.

Bottle	1 litre	#351010701
---------------	----------------	-------------------



REPLICAST

Duplicating flasks for the production of partial and full acrylic prosthetics, model cast prosthetics, bite splints as well as cover denture prosthetics in the acrylic casting technique made from 2 different materials (important feature for duplicating with silicones):

- the lower part (base) made from metal leads the gel formation effect at the beginning of the cooling process in a half-height cold water bath towards to the model
- the top part (cover) made from plastic effects an outwards isolation. The outwards progressing gel formation effects a close-fitting duplicating material at the model.



- **quick closing and opening by fixed clip-lock**
- **nonbreakable, distortion-free plastic top part, easy to clean**

REPLICAST G for gel duplicating	1 pc.	#803921001
---	--------------	-------------------

REPLICAST S for silicone duplicatin	1 pc.	#803921201
---	--------------	-------------------

ALUKOR

A highly purified white corundum with a share of 99,7% aluminium oxide. It contains no SiO₂, hence causes no danger of silicosis. Extremely hard and sharp-edged grain with high stability provides for best abrasion and results an economical consumption. The grain does not wear out but splinters and by that keeps its sharpness during the complete use.



	ALUKOR 50	ALUKOR 110	ALUKOR 125
25 kg bag	#181050125	#181110125	#181125125
25 kg reclosable PE-bag	#181050325	#181110325	#181125325
5 kg reclosable PE-bag	#181050505	#181110505	#181125505
5 kg bucket	#181050405	#181110405	#181125405

	ALUKOR 150	ALUKOR 250
25 kg bag	#181150125	#181250125
25 kg reclosable PE-bag	#181150325	#181250325
5 kg reclosable PE-bag	#181150505	#181250505
5 kg bucket	#181150405	#181250405

SIOPERL

Blasting medium made from hardened and lead-free natron glass in form of beads that produce an even silky mat finish on metal surfaces. There is no metal loss because it doesn't cause an abrasive effect.



	SIOPERL 50	SIOPERL 150
25 kg bag	#183050125	#183150125
25 kg reclosable PE-bag	#183050325	#183150325
5 kg reclosable PE-bag	#183050505	#183150505

SIOKOR

Mixture from glass beads and aluminium oxide for abrasive blasting of non-precious alloys in model casting - 250µ.

	SIOKOR 250
25 kg reclosable PE-bag	#185250325
5 kg reclosable PE-bag	#185250505

CERAPERL

Zirconia based blasting beads (50µ) for surface compression and conditioning on all kinds of alloys, iron-free, extremely tough.

	CERAPERL 50
25 kg can	#187050425
5 kg reclosable PE-bag	#187050505



ABRASIVES

Cutting Discs with fibre reinforcement

for metals

- great time saving - less tool changing
- no unpleasant smell due to glass fibre reinforcement
- long life span
- best breaking strength

FIBER-DISC ST	22 x 0,2 mm	pack of 50 pcs.	#103220250
FIBER-DISC S	22 x 0,3 mm	pack of 50 pcs.	#103220350
FIBER-DISC SB	25 x 0,5 mm	pack of 50 pcs.	#103250550
FIBER-DISC LS	40 x 0,5 mm	pack of 50 pcs.	#103400550
FIBER-DISC LB	40 x 0,7 mm	pack of 50 pcs.	#103400750
FIBER-DISC L	40 x 1,0 mm	pack of 50 pcs.	#103401050



Cutting Discs without fibre reinforcement

for metals

SLIM-DISC	22 x 0,3 mm	pack of 100 pcs.	#102220310
SLIM-DISC	22 x 0,3 mm	pack of 200 pcs.	#102220320
CUT-DISC S	22 x 0,6 mm	pack of 100 pcs.	#102220610
CUT-DISC M	25 x 0,6 mm	pack of 100 pcs.	#102250610
CUT-DISC L	37 x 1,0 mm	pack of 100 pcs.	#102371010

for ceramics

CERAMI-DISC S	22 x 0,20 mm	pack of 100 pcs.	#101220210
CERAMI-DISC M	22 x 0,26 mm	pack of 100 pcs.	#101222610



for ceramics

- great time saving - less tool changing
- no unpleasant smell due to glass fibre reinforcement
- long life span
- best breaking strength
- no abrasive traces on ceramics

FIBER-DISC CT	22 x 0,2 mm	pack of 50 pcs.	#106220250
FIBER-DISC C	22 x 0,3 mm	pack of 50 pcs.	#106220350

for ceramics and zircon, diamond-coated

FIBER DISC DT	20 x 0,2 mm	pack of 10 pcs.	#105200210
FIBER DISC D	20 x 0,3 mm	pack of 10 pcs.	#105200310

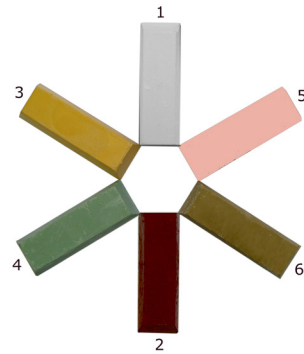
Grinding Discs

GRIND-DISC B	35 x 3,0 mm	pack of 25 pcs.	#102353025
---------------------	--------------------	------------------------	-------------------



Polishing Pastes

Mixture of grinding mediums and waxes, manufactured in a grease consistency which sticks very well on the polishing brush. The regular distribution of the abrasives causes a very constant polishing result. An excessive abrasion of the polishing brush and an overheating of the object can be avoided by a sufficient quantity lay on the brush.




bars approx. 350 g

pre polishing precious metal	1 light grey	#191011025
final polishing precious metal	2 parisienne red	#191013025
pre polishing non-precious metal	3 yellow	#191051025
final polishing non-precious metal	4 green	#191053025
pre polishing acrylics	5 pink	#191091025
final polishing acrylics	6 orange	#191093025

BRILLI

Water-soluble diamond abrasive paste with high quality nature diamonds in regular grain size of 2µ for high-polish on ceramic, precious metal and non precious metal. It allows an economical use from a syringe.

Syringe		5 g	#193073605
---------	---	------------	-------------------

Corundum Paper/ Emery Cloth

Wear-resistant, flexible paper pad or cloth pad with regular grain coating guarantees an excellent smoothing to curves and contours and by that a regular grinding or polishing performance. Full synthetic resin bonding agent for an outstanding grain adhesion.

Rolls of 50m, available in practically dispenser box which is expandable to an endless set by fitting together the cap-tongues on top and bottom side of the carton.



Corundum Paper

80	#151008950
100	#151010950
120	#151012950
150	#151015950
180	#151018950
220	#151022950
240	#151024950
320	#151032950
600	#151060950
800	#151080950
1000	#151100950
1200	#151120950

Emery Cloth

80	#153008950
100	#153010950
120	#153012950
150	#153015950
180	#153018950
220	#153022950
240	#153024950
280	#153028950
320	#153032950
400	#153040950

LIQUIPOL

Produces a brightness surface on all customary model casting alloys without stripes and is suitable for all electrolytic polishing units used in dental field.

Bottle	1 litre	#321010701
---------------	----------------	-------------------



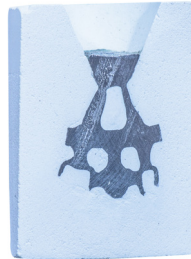
MODEL CASTING

Investing Materials Speed Universal

ECOVEST PCS

- universal speed investment material for all alloys, phosphate-bound, carbon-free
- for gel and silicon duplicating (REPLIGEL P, REPLISIL 22 N)
- a special composition of selected raw materials guarantees highest precision and keeps nevertheless a special degree of insensitivity
- finest grain structure and high density guarantees an extremely smooth surface and very stable margins
- high thermal stability, easy removable

unit		item number
2 x 2,5 kg	+ 1 litre ECOVEST LC	293225051
28 x 160 g	+ 1 litre ECOVEST LC	293281645
35 x 160 g	without liquid	293351656
125 x 160 g	without liquid	293801620



ECOVEST CB

- rapid heating universal-speed-investment for NPA and precious metal casting technique Type 1
- carbon-free, phosphate-bonded and plasterless
- may be used for the conventional as well as for the rapid burnout method heating

unit		item number
30 x 150 g	+ 1 litre ECOVEST L	293301545

Investing Materials Speed CoCr-Alloys

ECOVEST PMS

- speed investment material for all alloys, phosphate-bound, carbon-free (also for conventionally heating procedure)
- for gel and silicon duplicating (REPLIGEL P, REPLISIL 22 N)
- for particularly smooth and detailed surfaces
- high thermal stability, easy removable

unit		item number
2 x 2,5 kg	incl. 1 litre ECOVEST LC	295022550
20 x 450 g	incl. 1 litre ECOVEST LC	295204590
40 x 150 g	incl. 1 litre ECOVEST LC	295401560



ECOVEST PM

- investment material for all alloys, phosphate-bound, carbon-free (also for conventionally heating procedure)
- for gel and silicon duplicating (REPLIGEL P, REPLISIL 22 N)
- for particularly smooth and detailed surfaces
- long processing time, easy removable
- problem-free and reliable in application

unit		item number
45 x 400 g	without liquid	295454018



ECOVEST PS

- Speed-Investment for the CoCr partial denture technique Type 2
- for the production of duplicate casts and dies for the CoCr model cast technique
- gypsum-free, phosphate-bonded

unit		item number
15 x 400 g	+ 1 litre ECOVEST L	295154060



ECOVEST LC

Universal-mixing-liquid for all phosphate-bound investments, degree of concentration 100%.

Bottle 1 litre #301010701

ECOVEST LCS

Universal-mixing-liquid for all phosphate-bound investments, degree of concentration 140%.

Bottle 1 litre #301030701

ECOVEST LP

Special-mixing-liquid for pressable ceramics, for all phosphate-bound investments, degree of concentration 100%.

Bottle 1 litre #301070701

ECOVEST L

Universal-mixing-liquid for all phosphate-bound investments, degree of concentration 100%, for ECOVEST CB + PS.

Bottle 1 litre #301050701



CERALINER

CERALINER is an inlay strip made from purest ceramic fibre paper for casting rings in crown and bridge technique as replacement of the former used asbestos liner.

BIOLINER

BIOLINER is the biologically harmless quality and in mode of action in accordance with CERALINER.



Dispenser box with rolls in length of 25m, 50mm or 55mm width, thickness 1mm.

CERALINER	50 x 1 mm	#201501025
CERALINER	55 x 1 mm	#201551025
BIOLINER	50 x 1 mm	#202501025
BIOLINER	55 x 1 mm	#202551025

CERATAPE

An inlay strip made from purest ceramic fibre paper for casting rings in C+B-technique, same as CERALINER but calibrated for the different sizes of casting rings.

Available in practically dispenser boxes of 200 strips in 50mm width and thickness of 1mm, boxes are expandable to a set of the 4 sizes by fitting together the cap-tongues on top and bottom side of the carton.



CERATAPE 1	size 1x	50 x 1 x 90 mm	#203501092
CERATAPE 3	size 3x	50 x 1 x 150 mm	#203501152
CERATAPE 6	size 6x	50 x 1 x 200 mm	#203501202
CERATAPE 9	size 9x	50 x 1 x 250 mm	#203501252

MODEL CASTING

ECOLLOY FMS

- NEM – non-precious metal alloy, CoCrWMo-based, nickel & beryllium free
- soft - 295 HV10
- easy to use and proven over many years

Chemical analysis*: Co 59% · Cr 25% · W 10% · Mo 4% · (C+Fe+Si+Mn) 2%

hardness	285-295 HV10	tensile strength	600-700 N/mm ²
elongation	7-10%	casting-temp.	1450-1470 C°
solidus-liquidus	1380-1420 C°	WAK	14,0x10-6 (20-600°C)
density	8,3 g/cm ³		

Box 1 kg #401592501

ECOLLOY NF

- NEM- model casting alloy, CoCrMo-based, nickel & beryllium free
- spring hard
- easy to use and proven over many years

Chemical analysis*: Co 63% · Cr 29% · Mo 6% · (C+Fe+Si+Mn) 2%

hardness	HV 350–380	tensile strength	700–800 N/mm ²
elongation	6–8%	casting-temp.	1460–1470°C
solidus-liquidus	1345–1430°C	WAK	15,5x10-6 (20-600°C)
density	8,4 g/cm ³		

Box 1 kg #402632901

ECOLLOY CS

- NEM-bonding alloy, NiCrMo-based, beryllium & gallium free
- easy to use and proven over many years

Chemical analysis*: Ni 63% · Cr 23% · Mo 10% · Fe 1,5% · Si 2% · C 0,05% · < Ce 1%

hardness	HV 190–200	tensile strength	450–550 N/mm ²
elongation	12–15%	casting-temp.	1410–1440°C
solidus-liquidus	1250–1310°C	WAK	14,0x10-6 (20–600°C)
density	8,2 g/cm ³		

Box 1 kg #403632301



* (Specification of average value according to reference-analysis)
0297 / class IIa / Medical Devices Directorate 93/42/EEC

NEUHEIT!

CERAGLAZE FINISH

Ready-to-use and easy to apply ceramic powder based glaze spray. For full ceramics and metal to ceramic restorations like inlays, onlays, veneers, crowns and bridges as well as zirconia oxide.

Advantages:

- most valuable ceramic on the market
- shiny, homogeneous and glassy surface
- perfect adhesion by diffusion
- quick and easy handling with best results
- even application by spraying (material-saving), thus no suspensions or bite increase
- no glaze chipping
- suitable for low and high melting processes

Ceramic Plates

CERABLEND

Painting plate with cover 1 pc. #777220102



CERAMIX

Mixing plate 1 pc. #777050501

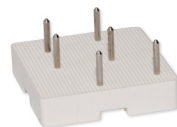


Firing Trays

CERATRAY

Firing tray made from porcelain. The honeycomb structure supports an individual positioning of the support pins and effects a very low thermal absorption.

55 x 55 x 12 mm 1 pc. #777955551



CERAPEG

Pins for CERATRAY honeycomb firing tray 20 x 2 mm made from special stainless steel alloy.

Pack 10 pcs. #779520210

CERAPAD

Firing trays from ceramic fibre paper, Ø 65 mm, thickness 15 mm. The isolating effect of the ceramic fibre paper removes only minimal heat from the object and has no negative effects by the contact on porcelain. Made in optimal size also for large dimensioned bridge constructions.



Pack 10 pcs. #779265251



Spray 75 ml #413001075

incl. oral nozzle for accurate spraying

EQUIPMENT & ACCESSORIES

ACRYCLAVE

Pressure pot made from aluminium for polymerisation of cold curing acrylics with resistant anti-corrosion coating. (TÜV/GS+CE)



ACRYCLAVE S 4 ltr. with filling hose and valve **#901100425**

ACRYCLAVE S 4 ltr. without filling hose and valve **#901300425**

ACRYCLAVE L 9 ltr. with filling hose and valve **#901100925**

ACRYCLAVE L 9 ltr. without filling hose and valve **#901300925**

Blow-off Nozzle

for 6 mm tube 1 pc.



#606000601

IWANSON measuring-gauges

for metal 1 pc.
with pointed feeler ends



#663010001

for wax 1 pc.
with round feeler ends



#665010001



Developer ...

... we develop silicones specially on customer request. You have an idea? Contact us and we try to make it happen.

Member ...

... Association of German Dental Industry.

Certified ...

... ISO 9001:2015.

Made in ...

... silicones made by dent-e-con.



Demolding time: The demolding time is the time required for the silicone to cure so as to be tack-free, so that it can be demolded. The times given in the individual products apply at 23 ° C - at higher temperatures shorten, at lower ones they lengthen. In the case of addition curing silicones, the demoulding time can be significantly shortened by means of tempering. The final properties are usually reached only after a few days.

Fillers: Silicone is filled with fillers during production in order to make it cheaper, to influence the properties (eg to achieve a desired Shore hardness) or to guarantee the vulcanisation process.

Inhibition: The inhibition of the vulcanization process by substances that affect it is called inhibition. Vulcanization disturbances can occur at the contact surface between the model or casting frame and silicone mixture and are generally due to „unclean“ work. Inhibited silicone does not harden or only delayed - it remains tacky or even viscous at the contact surface.

Tensile elongation (%): Tensile elongation is the elongation in relation to the initial length at the moment the silicone tears. For complex moldings with large undercuts, silicone should be used with high tensile elongation as the material is exposed to high tensile loads during demoulding.

Tensile Strength: The tensile strength is the force necessary to tear a silicone with a defined cross-section. It is measured in N / mm².

Shrinkage, linear: Silicone shrinks more or less during the curing process. Depending on the application, however, the dimensional accuracy of the silicone is of great importance. For example, high demands are placed on the impression accuracy in the dental field, but also in precision model construction.

Shore hardness: Shore hardness indicates how hard or soft a material is. Of soft materials, such as silicone, it is indicated in Shore A (Sh-A). For harsher materials, other Shore units (eg Shore D for cured PUR casting resins) are used. Depending on the type of vulcanisation and the tensile strength, Shore hardness A is the most important criterion when choosing the right silicone for a defined application.

Temperature resistance: Silicones can be used up to approx. 180 ° C, and up to approx. 220 ° C in the short term.

Pot life: Pot life is the time at which the silicone can be processed from the beginning of the mixing process. It is precisely defined as the time required for the silicone to double its viscosity. It is advisable to only use as much material as can be processed during the pot life. If a vacuum is used, a longer pot life of the mixture gives more time for venting, resulting in less bubbles in the impression.

Resistance to tearing: The tear strength means the force required to tear open torn silicone. It is measured at a material thickness of 1 mm and stated in N / mm.

dent-e-con e.K.
Gartenstraße 19
D-89173 Lonsee
Germany



Telephone: +49 (0)7336 92133-69
Fax: +49 (0)7336 92133-79
Email: info@dent-e-con.de
Internet: www.dent-e-con.de

